

## High Gain Panel Antenna

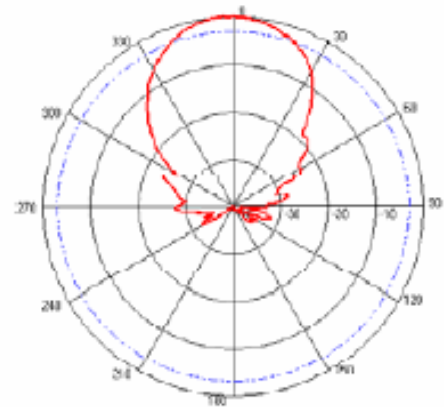
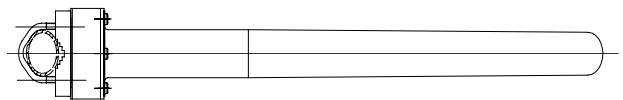
Product Number : PW-HGP-1710/2170

### Electrical Specifications :

Frequency Range	1710 – 2170 MHz
Gain	12 dBi
Horizontal 3dB Beamwidth	42°
Vertical 3dB Beamwidth	37°
Front-to-back Ratio	> 20dB
Polarization	Vertical
Impedance	50 Ω
VSWR	< 1.5
Maximum Input Power	200 W
Connector	N-type
Lightning Protection	Direct Grounding



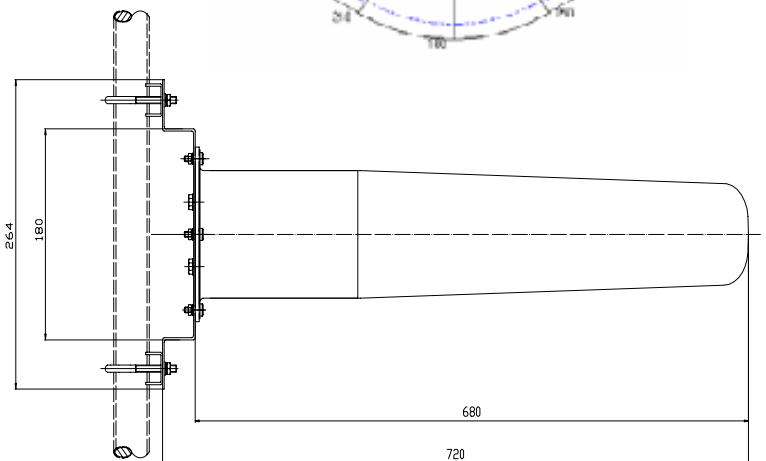
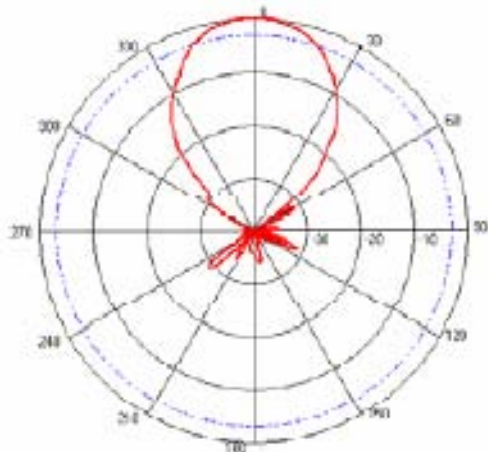
### Horizontal Polarization Pattern



### Mechanical Specifications :

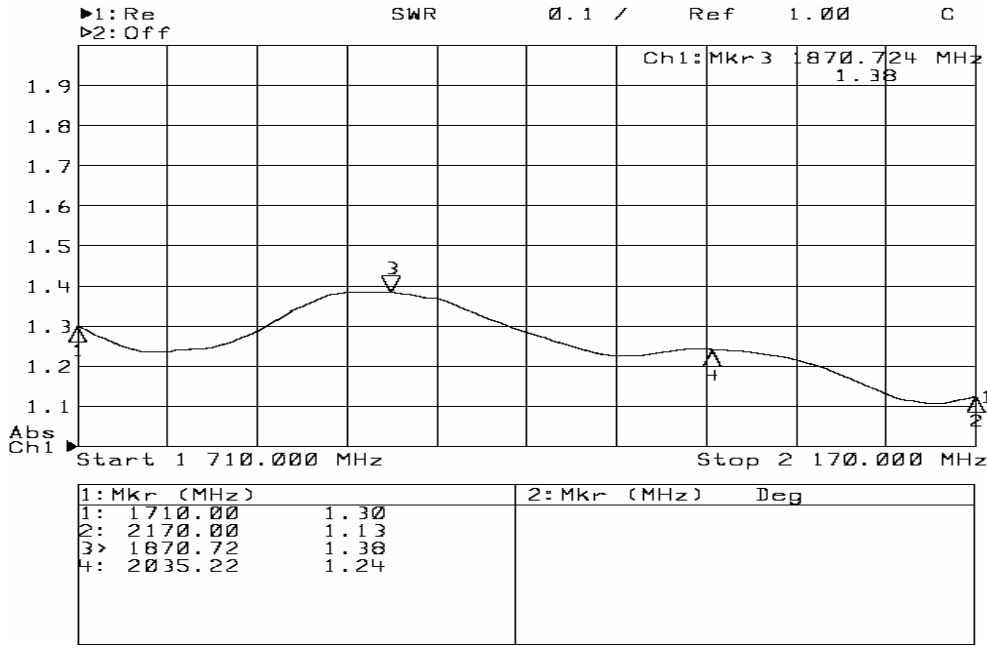
Dimensions ( L×W×D )	680 x 254 x 80mm
Weight of Antenna	2.0kg
Radome Material	Fiberglass
Rated Wind Velocity	160Km/h

### Vertical Polarization Pattern

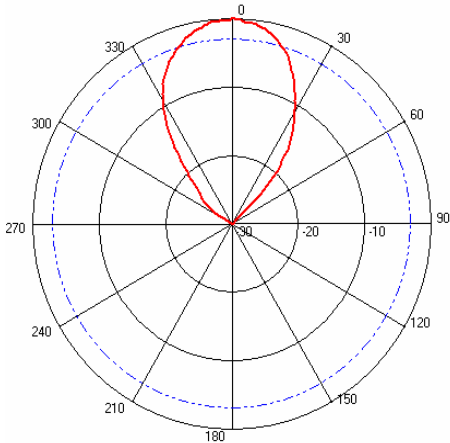


(This antenna is also applicable for installation at Outdoor Environment )

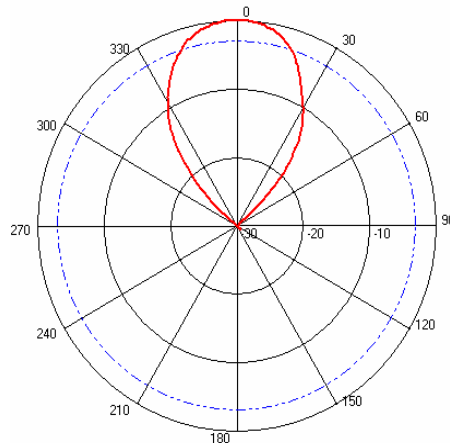
VSWR OF PW-HGP-1710/2170



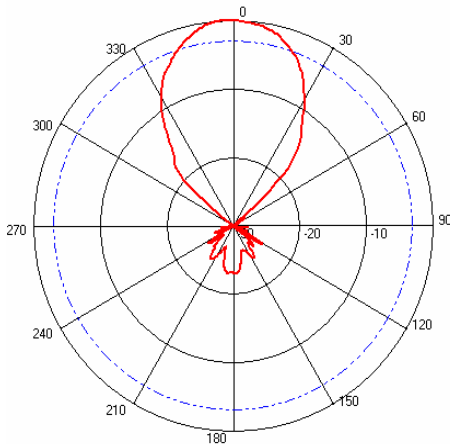
Pattern of PW-HGP-1710/2170 E Plane (Vertical)



Frequency: 1700MHz  
 Gain: 12.2dBi 3dB Beamwidth: 33.3°

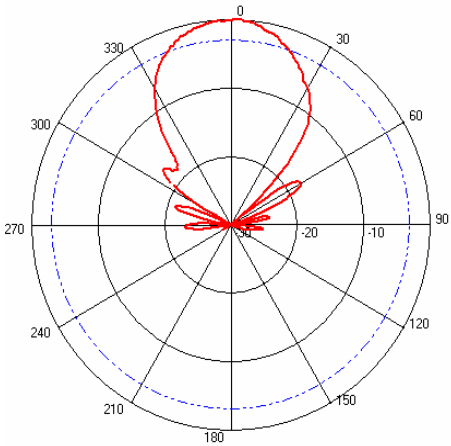


Frequency: 1900MHz  
 Gain: 12.0dBi 3dB Beamwidth: 35.2°

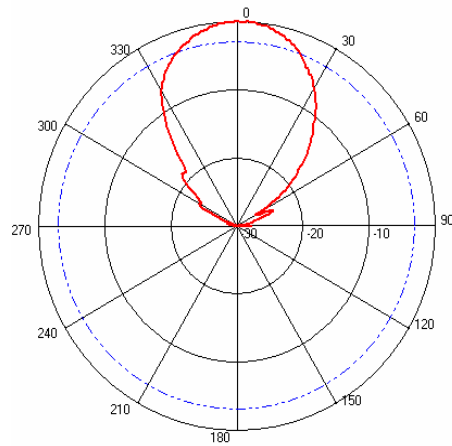


Frequency: 2170MHz  
 Gain: 12.0dBi 3dB Beamwidth: 36.9°

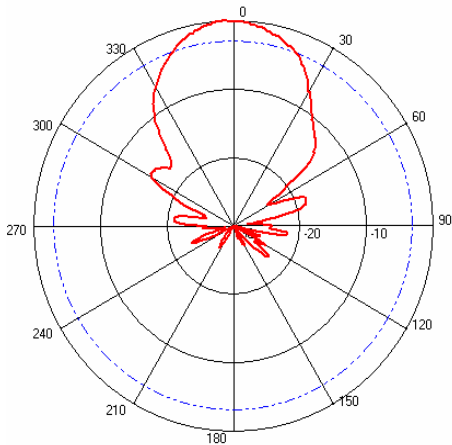
Pattern of PW-HGP-1710/2170 H Plane(Horizontal)



Frequency:1700MHz  
3dB Beamwidth:39.6°



Frequency:1900MHz  
3dB Beamwidth:39.6°



Frequency:2170MHz  
3dB Beamwidth:39.6°