

DUAL BAND DUAL POLARISED PANEL ANTENNA GSM900/1800 XP/85/16/4 Type 1663

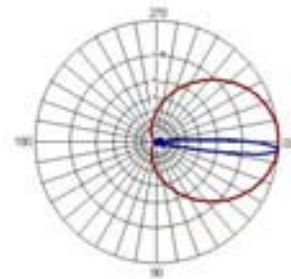
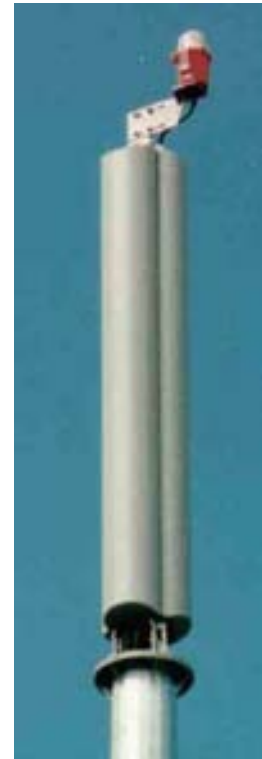
- ❑ INBUILT DIPLEXER
- ❑ SIDELOBE SUPPRESSION

These dual-band models are intended to reduce the antenna hardware required to operate GSM900 and GSM1800 at the same sites. The units feature inbuilt diplexers to simplify connection to feeder cables.

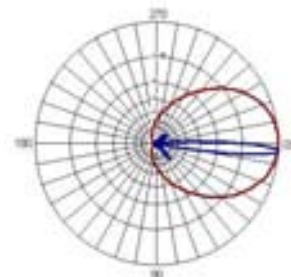
A number of models provide gain & fixed electrical downtilt to exactly suit the location. Superior circuit design coupled with advanced manufacturing techniques guarantee consistent product quality, with excellent intermodulation performance.

TECHNICAL SPECIFICATION

	GSM900	GSM1800
Frequency	870-960Mhz	1710-1880Mhz
Gain	16dBi	15.8dBi
VSWR	1.5:1 max	1.5:1 max
Horizontal Beamwidth	85°	85°
Vertical Beamwidth	8.6°	6.6°
Polarisation	+45° and -45°	+45° and -45°
Fixed Electrical Downtilt	4°	4°
Upper Sidelobe Suppression	>17dB	>13dB
Front-To-Back Ratio	>25dB	>25dB
Isolation Between Ports	>23dB	>23dB
Isolation Between Bands	>22dB	>22dB
Power Rating	300W	200W
Connectors (bottom)	2 x 7/16 DIN female	
Impedance	50Ω	
Lightning Protection	DC grounded	
Dimensions (LxWxD)	2330 x 253 x 180 mm	-
Wind Loading	900N @ 45m/s	-
Operational Wind Speed	45m/s	-
Survival Wind Speed	56m/s	-
Weight (antenna only)	17.5kg	-
Temperature	-55° to +70°C	
Brackets	Not Included	



GSM900



GSM1800