

## High Gain Panel Antenna

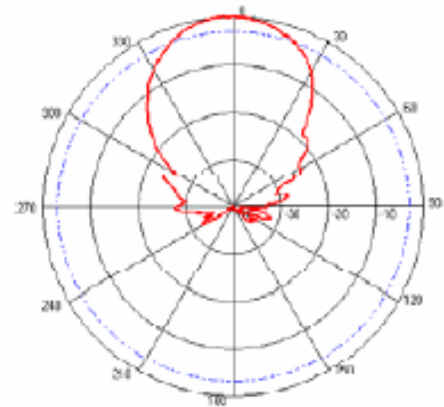
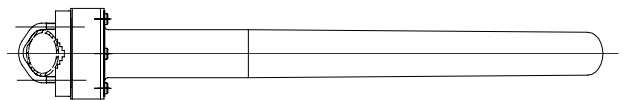
Product Number : PW-HGP-1710/2170

### Electrical Specifications :

|                          |                  |
|--------------------------|------------------|
| Frequency Range          | 1710 – 2170 MHz  |
| Gain                     | 12 dBi           |
| Horizontal 3dB Beamwidth | 42°              |
| Vertical 3dB Beamwidth   | 37°              |
| Front-to-back Ratio      | > 20dB           |
| Polarization             | Vertical         |
| Impedance                | 50 Ω             |
| VSWR                     | < 1.5            |
| Maximum Input Power      | 200 W            |
| Connector                | N-type           |
| Lightning Protection     | Direct Grounding |



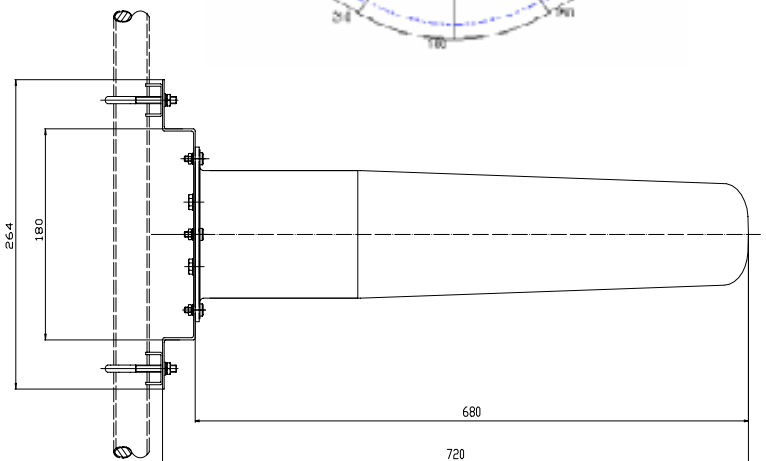
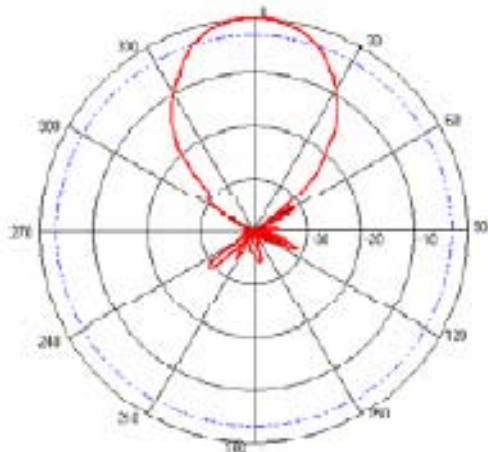
### Horizontal Polarization Pattern



### Mechanical Specifications :

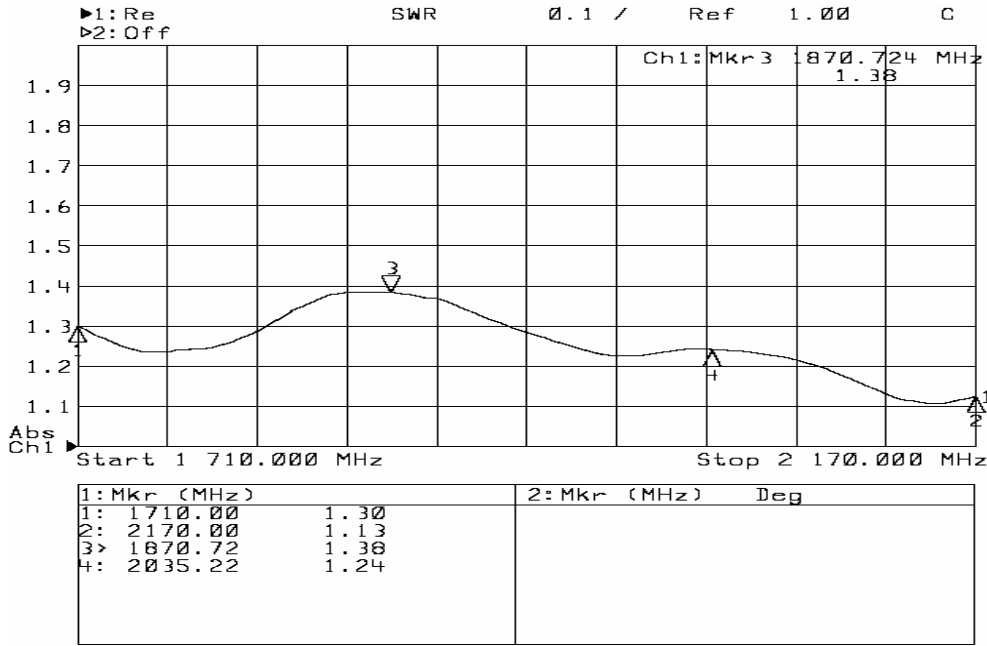
|                      |                  |
|----------------------|------------------|
| Dimensions ( L×W×D ) | 680 x 254 x 80mm |
| Weight of Antenna    | 2.0kg            |
| Radome Material      | Fiberglass       |
| Rated Wind Velocity  | 160Km/h          |

### Vertical Polarization Pattern

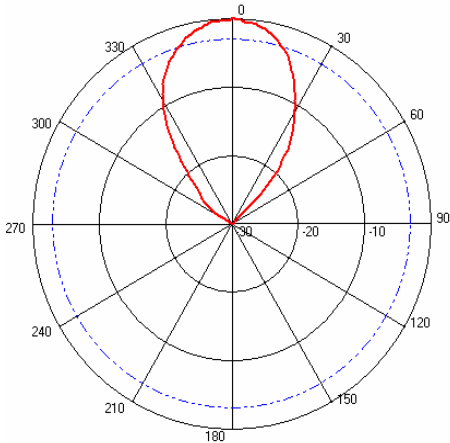


(This antenna is also applicable for installation at Outdoor Environment )

VSWR OF PW-HGP-1710/2170

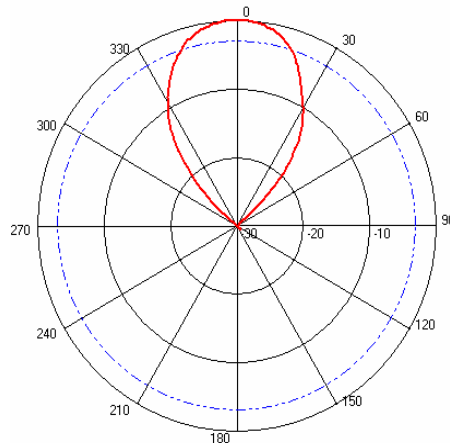


Pattern of PW-HGP-1710/2170 E Plane (Vertical)



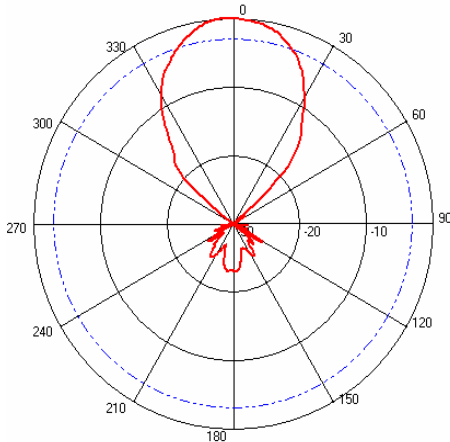
Frequency: 1700MHz

Gain: 12.2dBi 3dB Beamwidth: 33.3°



Frequency: 1900MHz

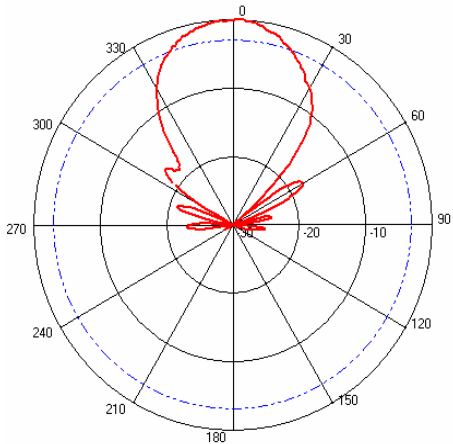
Gain: 12.0dBi 3dB Beamwidth: 35.2°



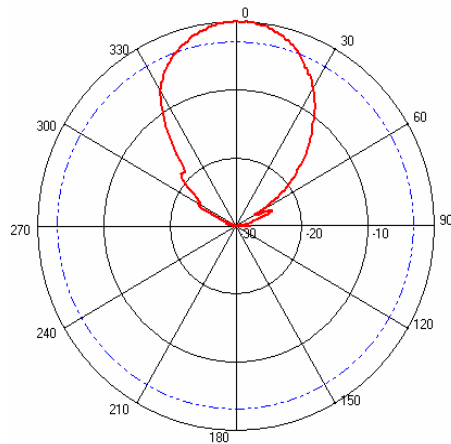
Frequency: 2170MHz

Gain: 12.0dBi 3dB Beamwidth: 36.9°

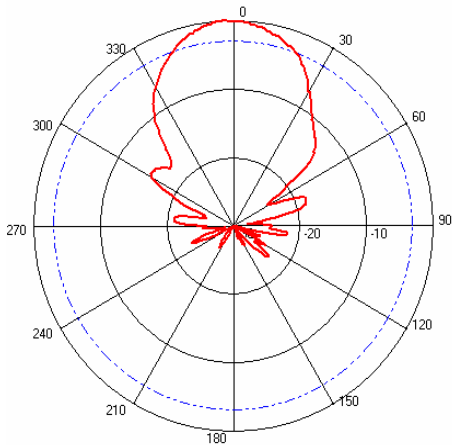
Pattern of PW-HGP-1710/2170 H Plane(Horizontal)



Frequency:1700MHz  
3dB Beamwidth:39.6°



Frequency:1900MHz  
3dB Beamwidth:39.6°



Frequency:2170MHz  
3dB Beamwidth:39.6°