

## High Gain Panel Antenna

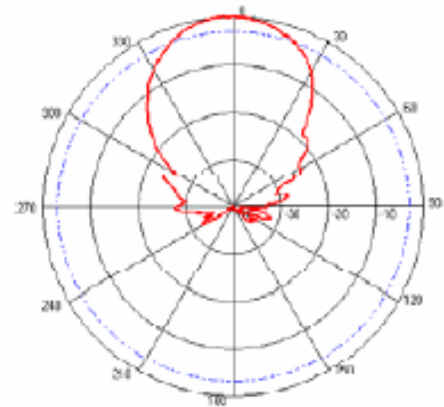
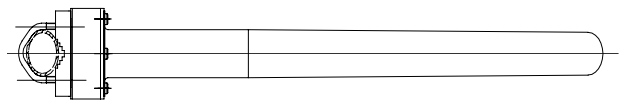
Product Number : PW-HGP-1710/2170

### Electrical Specifications :

Frequency Range	1710 – 2170 MHz
Gain	12 dBi
Horizontal 3dB Beamwidth	42°
Vertical 3dB Beamwidth	37°
Front-to-back Ratio	> 20dB
Polarization	Vertical
Impedance	50 Ω
VSWR	< 1.5
Maximum Input Power	200 W
Connector	N-type
Lightning Protection	Direct Grounding



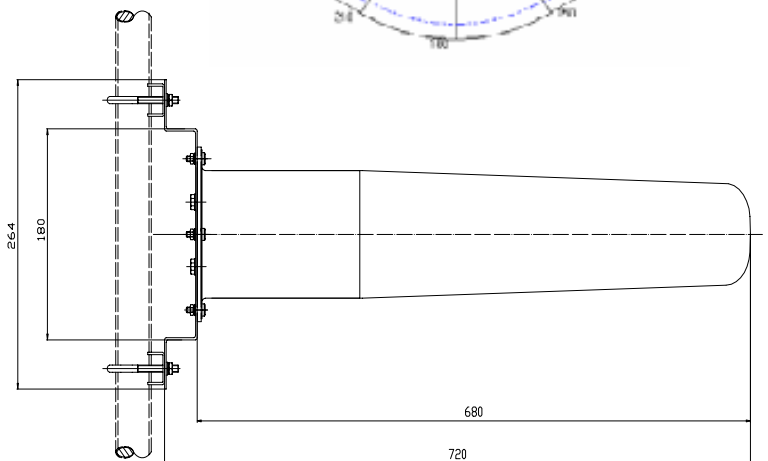
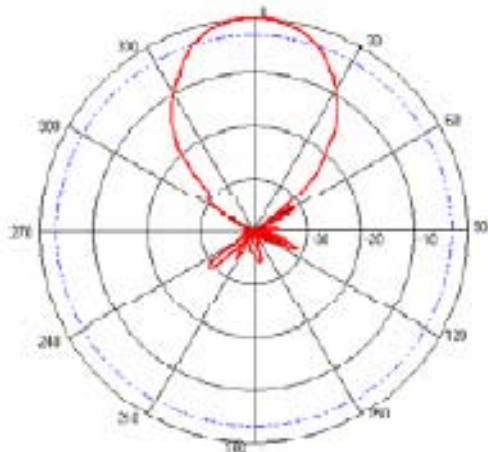
### Horizontal Polarization Pattern



### Mechanical Specifications :

Dimensions ( LxWxD )	680 x 254 x 80mm
Weight of Antenna	2.0kg
Radome Material	Fiberglass
Rated Wind Velocity	160Km/h

### Vertical Polarization Pattern



(This antenna is also applicable for installation at Outdoor Environment )

**Installation Guide :**

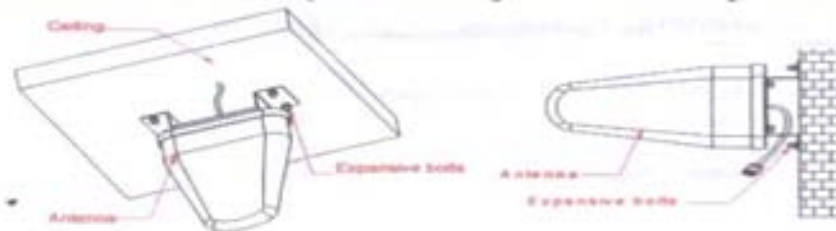
Three common installation methods are described by Figure 1-3.

1. Mounted on a pole. (With U type clip set.)



**Fig.1 For pole mounting in lift**

2. Mounted on a wall (Horizontally fixed with expansive bolts).



**Fig.2 For wall mounting in lift room or aisle**

3. Mounted on a wall (Vertically fixed with expansive bolts and L connector)



**Fig.3 For wall mounting in lift room**