

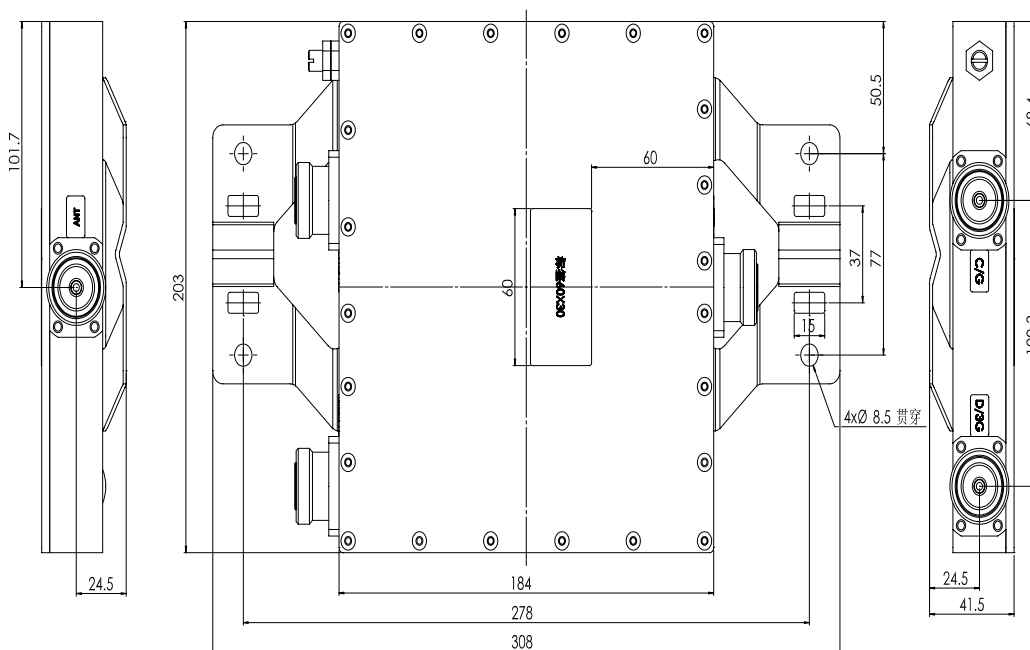
CDMA800-GSM900 / GSM1800-UMTS2100 COMBINER

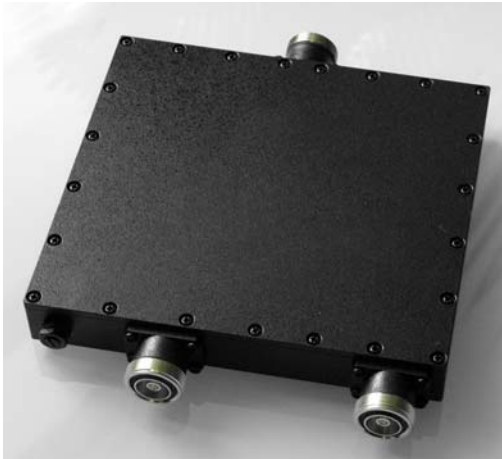
Model : PW-DUP-8068-D

- 1、 Part Number : PW-DUP-8068-D
- 2、 Product Name: Dual-band Combiner

	CH1	CH2
Frequency (MHz)	800 - 960	1710 - 2170
Band width (MHz)	160	250
Insertion loss (dB)	≤0.3	≤0.3
Ripple in-band (dB)	≤0.2	≤0.2
Rejection (dB)	≥50@CH2	≥50@CH1
Isolation (dB)	≥50@CH2	≥50@CH1
VSWR	≤ 1.2	
Impedance (Ω)	50	
PIM (dBc)	≤-140 @+43dBm×2	
Other	Dc by pass all ports and waterproof (IP68)	
Connector	DIN-F	
Power rating (W)	300	
Temperature (°C)	-30 ~ +70	
Size (mm)	308 × 203 × 41.5	
Weight (kg)	2.71	

- 3、 Product Picture :





4. Product Test :

